

TRIDEL
BUILT FOR LIFE



BILD

2013 BILD Home Builder of the Year

AWARD OF EXCELLENCE



2013
Builder of the Year
HIGH-RISE BUILDER

2013 Tarion High-Rise Builder of the Year





BILD

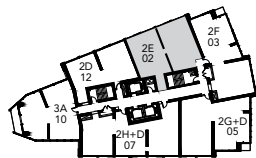
2013 BILD Home Builder of the Year

AWARD OF EXCELLENCE



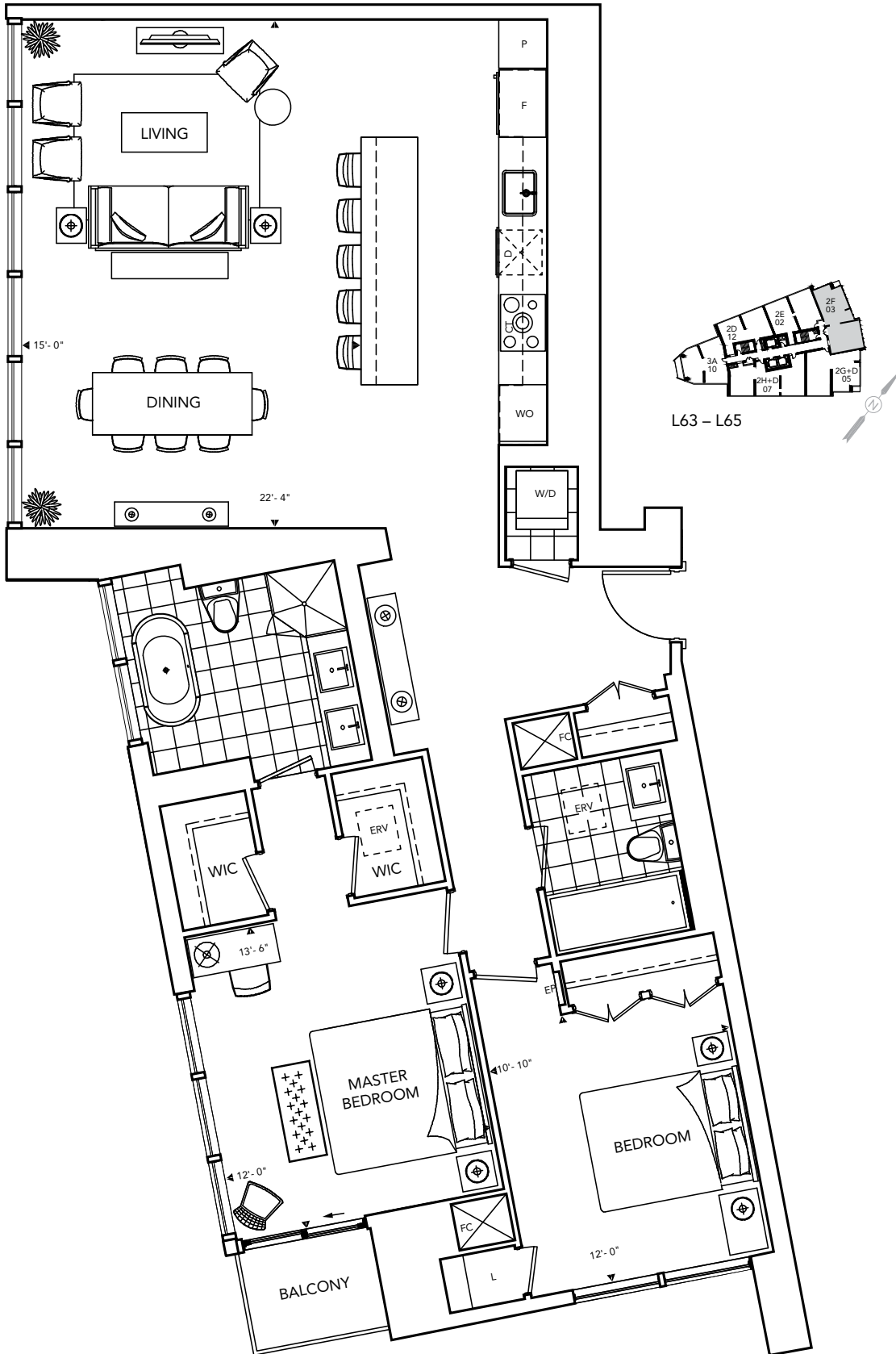
2013
Builder of the Year
HIGH-RISE BUILDER

2013 Tarion High-Rise Builder of the Year



L63 - L65





BILD

2013 BILD Home Builder of the Year



2013 Tarion High-Rise Builder of the Year



Some features may vary by suite design. *Prices and specifications subject to change without notice. Illustrations are artists' concepts. Furniture is displayed for illustration purposes only and does not necessarily reflect the electrical plan for the suite. Suites are sold unfurnished. The approximate areas or square footages of the above-noted suites (and of the balconies or terraces associated therewith) are subject to change without notice, and the Vendor/Declarant shall have no liability for any resulting variance(s) between the actual final area(s) thereof and the stated area(s) outlined above. See sales representative for details. Tridel®, and Tridel Built Green. Built for Life.® are registered trademarks of Tridel and used under license agreement. ©Tridel 2013. All rights reserved. E. & O.E. May 15 2013.

2G+D

2 Bedrooms Plus Study Room
1,687 sq.ft.*

Tentative Occupancy Summer 2017*

TRIDEL
BUILT FOR LIFE



BILD

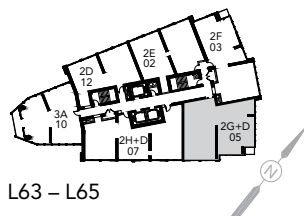
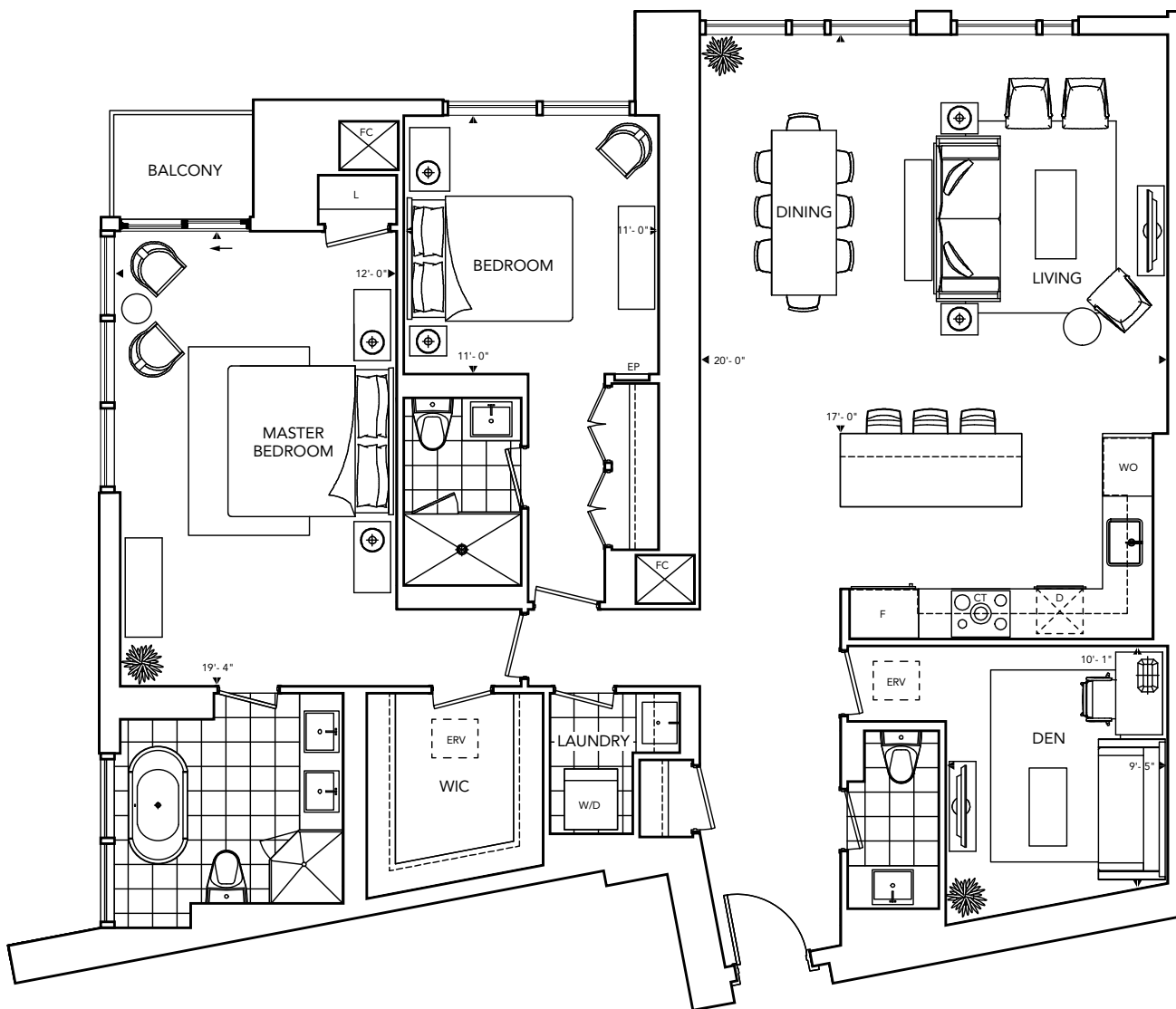
2013 BILD Home Builder of the Year

AWARD OF EXCELLENCE



2013
Builder of the Year
HIGH-RISE BUILDER

2013 Tarion High-Rise Builder of the Year



L63 - L65

Some features may vary by suite design. *Prices and specifications subject to change without notice. Illustrations are artists' concepts. Furniture is displayed for illustration purposes only and does not necessarily reflect the electrical plan for the suite. Suites are sold unfurnished. The approximate areas or square footages of the above-noted suites (and of the balconies or terraces associated therewith) are subject to change without notice, and the Vendor/Declarant shall have no liability for any resulting variance(s) between the actual final area(s) thereof and the stated area(s) outlined above. See sales representative for details. Tridel®, and Tridel Built Green. Built for Life.® are registered trademarks of Tridel and used under license agreement. ©Tridel 2013. All rights reserved. E. & O.E. May 15 2013.

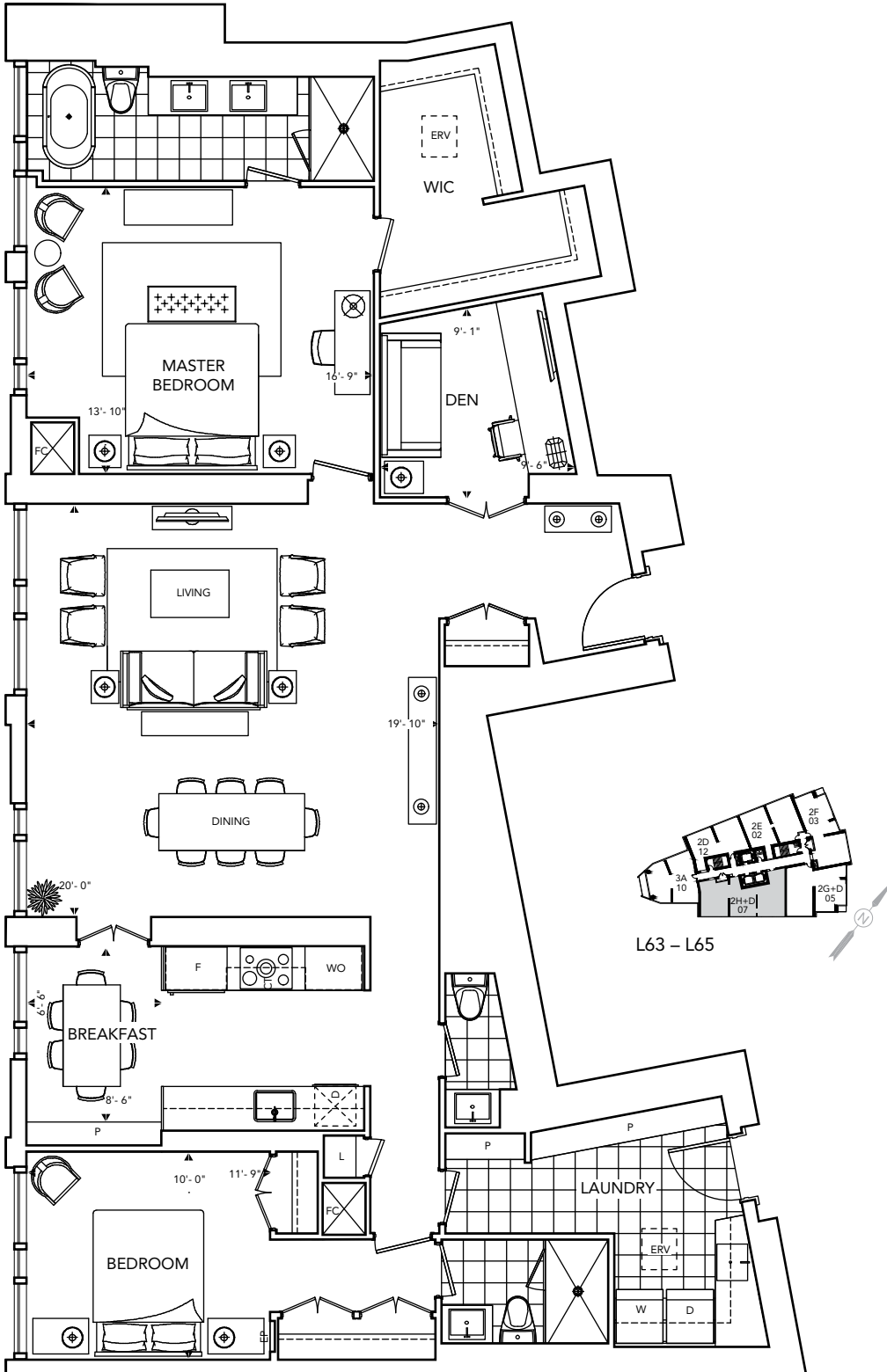


2H+D

2 Bedrooms Plus Study Room

1,896 sq.ft.*

Tentative Occupancy Summer 2017*



TRIDEL
BUILT FOR LIFE



BILD

2013 BILD Home Builder of the Year



2013 Tarion High-Rise Builder of the Year

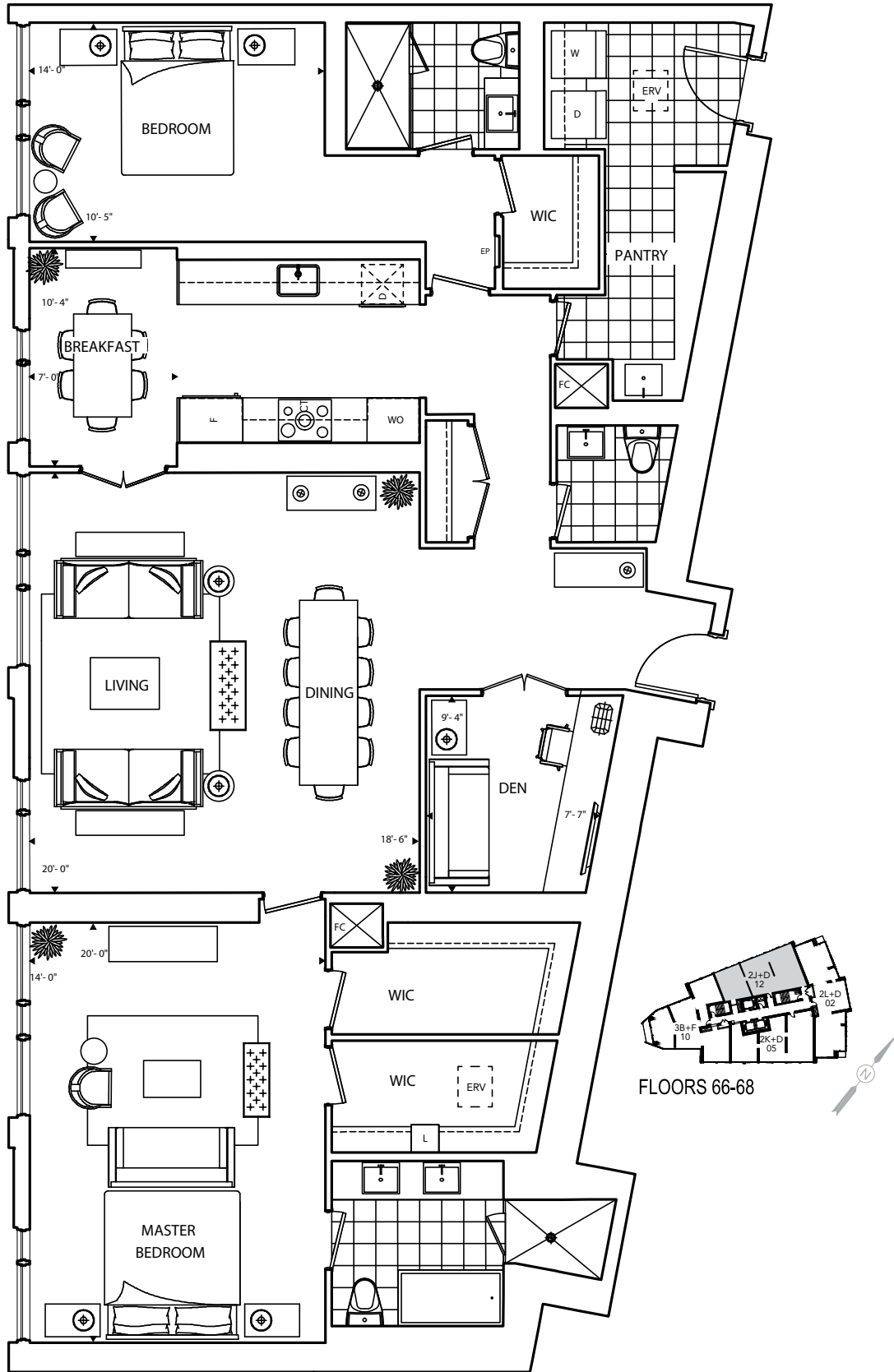


Some features may vary by suite design. *Prices and specifications subject to change without notice. Illustrations are artists' concepts. Furniture is displayed for illustration purposes only and does not necessarily reflect the electrical plan for the suite. Suites are sold unfurnished. The approximate areas or square footages of the above-noted suites (and of the balconies or terraces associated therewith) are subject to change without notice, and the Vendor/Declarant shall have no liability for any resulting variance(s) between the actual final area(s) thereof and the stated area(s) outlined above. See sales representative for details. Tridel®, and Tridel Built Green. Built for Life.® are registered trademarks of Tridel and used under license agreement. ©Tridel 2013. All rights reserved. E. & O.E. May 15 2013.

2J+D

2 Bedrooms Plus Study Room
2,009 sq.ft.*

Tentative Occupancy Summer 2017*



2013 BILD Home Builder of the Year



2013 Tarion High-Rise Builder of the Year

Some features may vary by suite design. *Prices and specifications subject to change without notice. Illustrations are artists' concepts. Furniture is displayed for illustration purposes only and does not necessarily reflect the electrical plan for the suite. Suites are sold unfurnished. The approximate areas or square footages of the above-noted suites (and of the balconies or terraces associated therewith) are subject to change without notice, and the Vendor/Declarant shall have no liability for any resulting variance(s) between the actual final area(s) thereof and the stated area(s) outlined above. See sales representative for details. Tridel®, and Tridel Built Green. Built for Life.® are registered trademarks of Tridel and used under license agreement. ©Tridel 2013. All rights reserved. E. & O.E. May 15 2013.

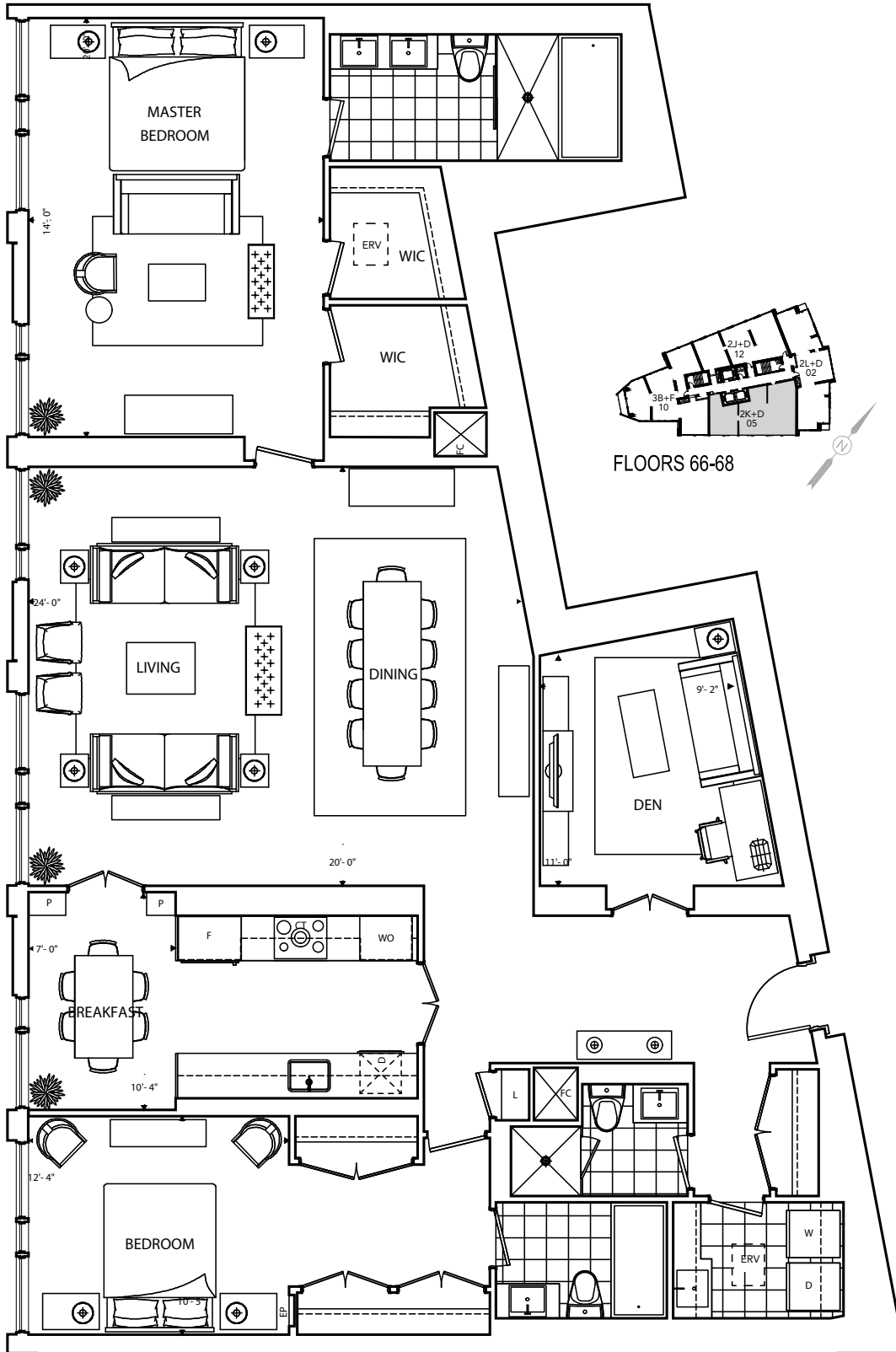


2K+D

2 Bedrooms Plus Study Room

2,153 sq.ft.*

Tentative Occupancy Summer 2017*



BILD

2013 BILD Home Builder of the Year



2013 Tarion High-Rise Builder of the Year

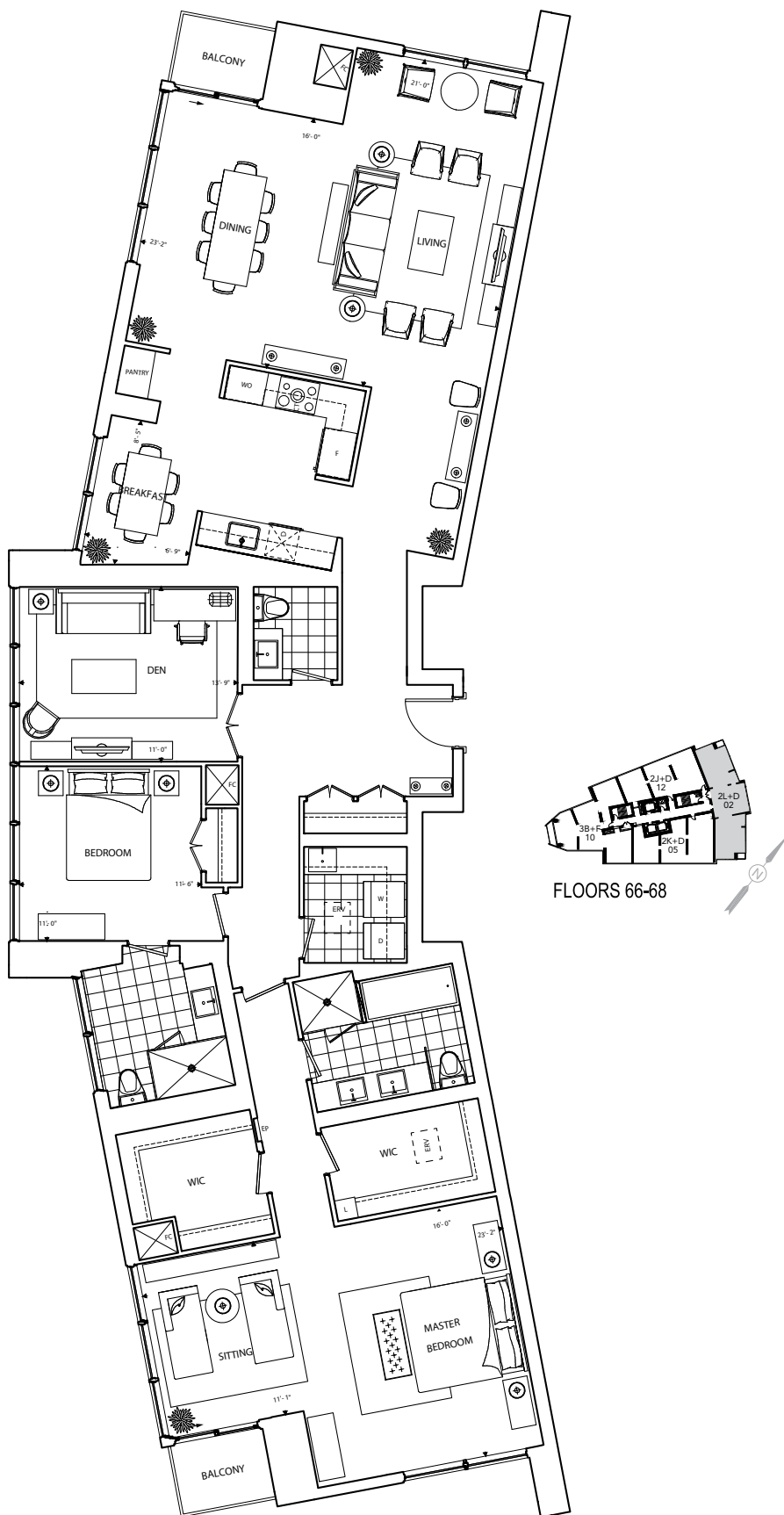


Some features may vary by suite design. *Prices and specifications subject to change without notice. Illustrations are artists' concepts. Furniture is displayed for illustration purposes only and does not necessarily reflect the electrical plan for the suite. Suites are sold unfurnished. The approximate areas or square footages of the above-noted suites (and of the balconies or terraces associated therewith) are subject to change without notice, and the Vendor/Declarant shall have no liability for any resulting variance(s) between the actual final area(s) thereof and the stated area(s) outlined above. See sales representative for details. Tridel®, and Tridel Built Green. Built for Life.® are registered trademarks of Tridel and used under license agreement. ©Tridel 2013. All rights reserved. E. & O.E. May 15 2013.

2L+D

2 Bedrooms Plus Study Room
2,308 sq.ft.*

Tentative Occupancy Summer 2017*



TRIDEL
BUILT FOR LIFE



BILD

2013 BILD Home Builder
of the Year

AWARD OF
EXCELLENCE



2013
Builder of the Year
HIGH-RISE BUILDER

2013 Tarion High-Rise
Builder of the Year



Some features may vary by suite design. *Prices and specifications subject to change without notice. Illustrations are artists' concepts. Furniture is displayed for illustration purposes only and does not necessarily reflect the electrical plan for the suite. Suites are sold unfurnished. The approximate areas or square footages of the above-noted suites (and of the balconies or terraces associated therewith) are subject to change without notice, and the Vendor/Declarant shall have no liability for any resulting variance(s) between the actual final area(s) thereof and the stated area(s) outlined above. See sales representative for details. Tridel®, and Tridel Built Green. Built for Life.® are registered trademarks of Tridel and used under license agreement. ©Tridel 2013. All rights reserved. E. & O.E. May 15 2013.

3B+F

3 Bedrooms Plus Family Room

2,551 sq.ft.*

Tentative Occupancy Summer 2017*

TRIDEL
BUILT FOR LIFE



BILD

2013 BILD Home Builder of the Year

AWARD OF EXCELLENCE

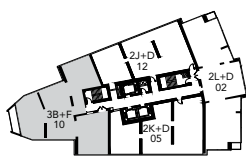
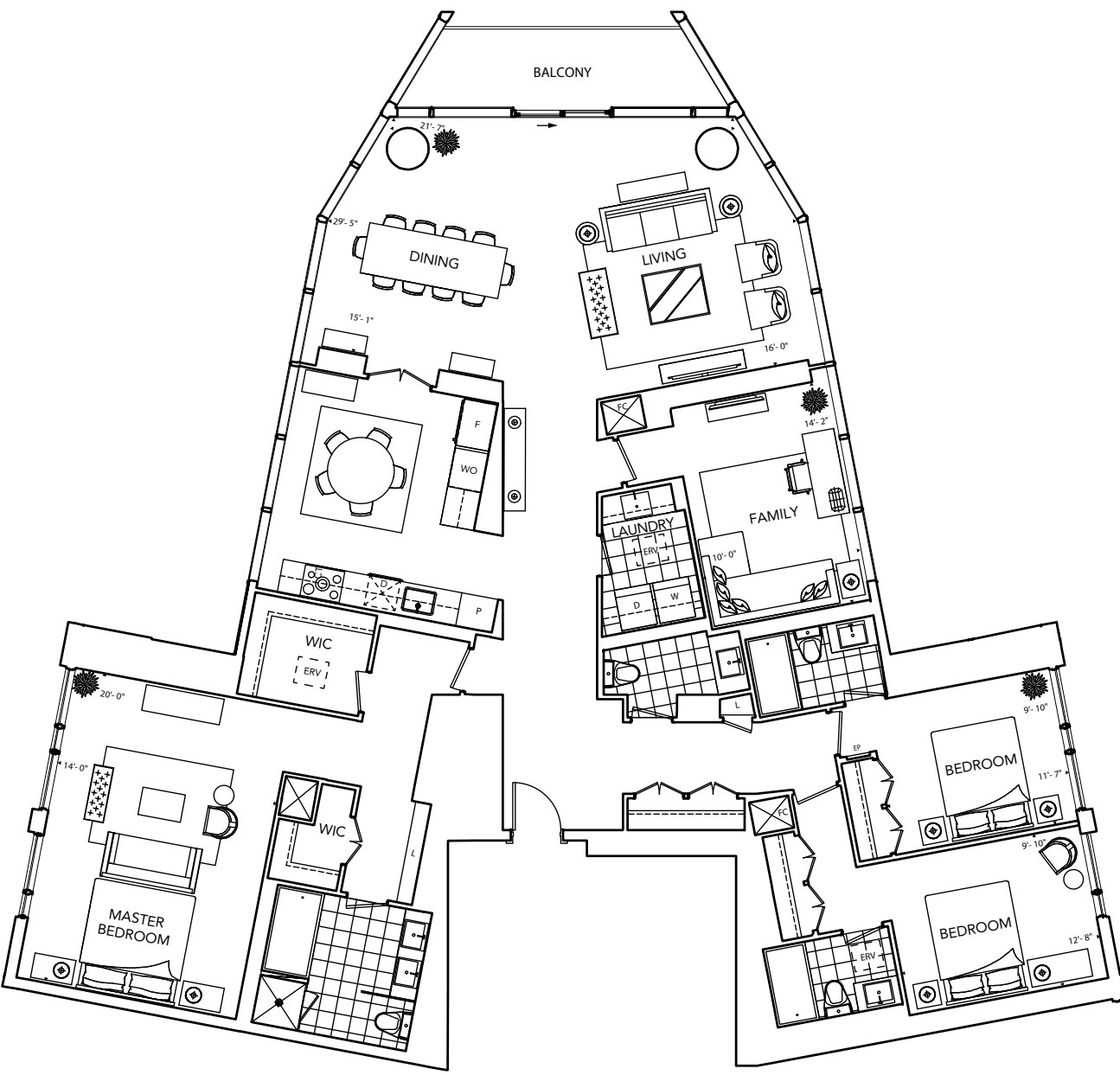


2013
Builder of the Year
HIGH-RISE BUILDER

2013 Tarion High-Rise Builder of the Year



tridel.com

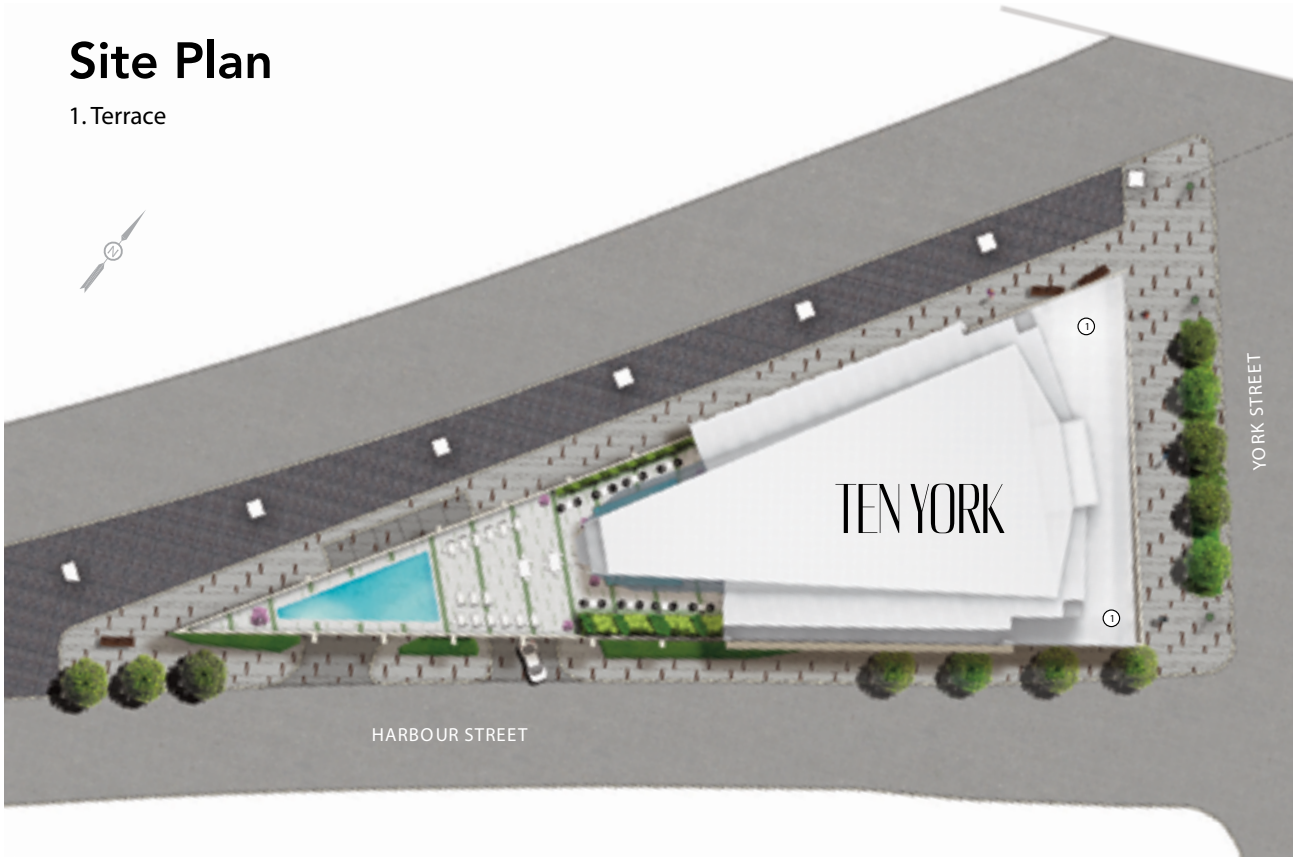


FLOORS 66-68

Some features may vary by suite design. *Prices and specifications subject to change without notice. Illustrations are artists' concepts. Furniture is displayed for illustration purposes only and does not necessarily reflect the electrical plan for the suite. Suites are sold unfurnished. The approximate areas or square footages of the above-noted suites (and of the balconies or terraces associated therewith) are subject to change without notice, and the Vendor/Declarant shall have no liability for any resulting variance(s) between the actual final area(s) thereof and the stated area(s) outlined above. See sales representative for details. Tridel®, and Tridel Built Green. Built for Life.® are registered trademarks of Tridel and used under license agreement. ©Tridel 2013. All rights reserved. E. & O.E. May 15 2013.

Site Plan

1. Terrace



BILD

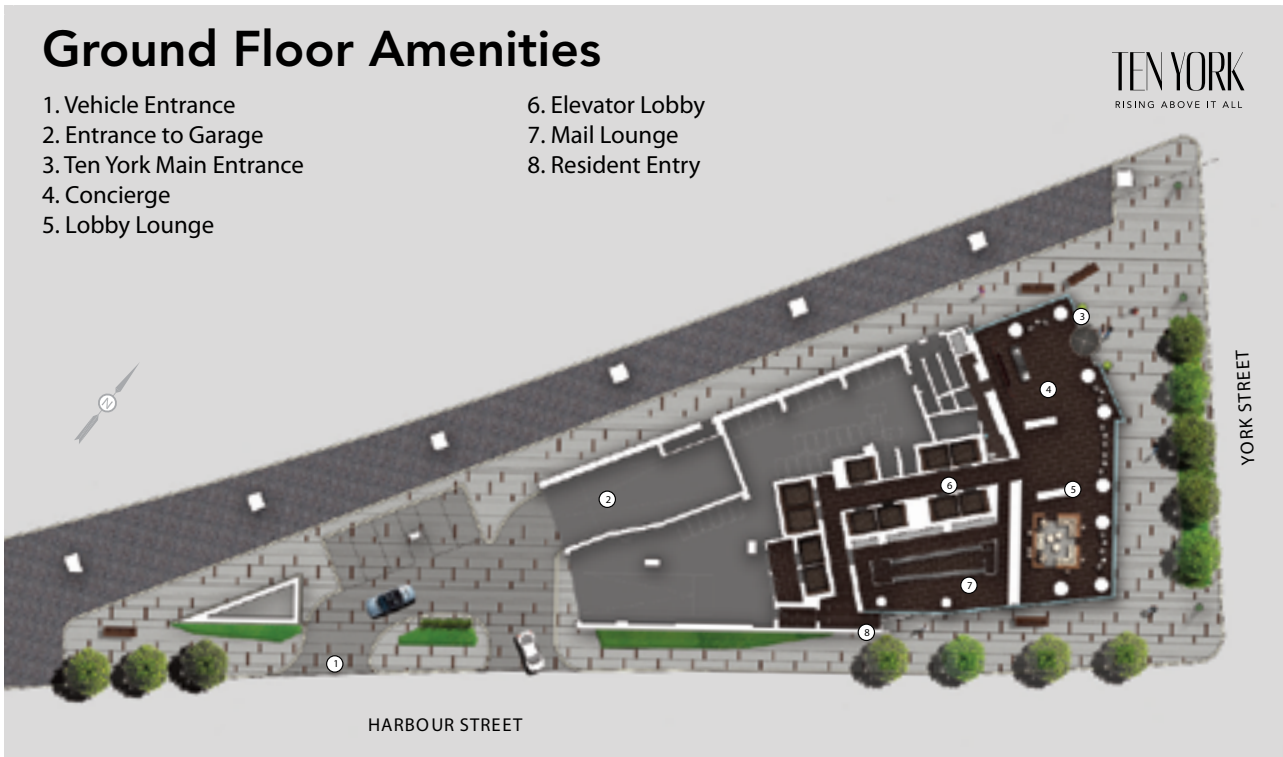
2013 BILD Home Builder of the Year



2013 Tarion High-Rise Builder of the Year

Ground Floor Amenities

- | | |
|---------------------------|-------------------|
| 1. Vehicle Entrance | 6. Elevator Lobby |
| 2. Entrance to Garage | 7. Mail Lounge |
| 3. Ten York Main Entrance | 8. Resident Entry |
| 4. Concierge | |
| 5. Lobby Lounge | |



TEN YORK
RISING ABOVE IT ALL



The Shore Club - 7th Floor

- | | |
|--------------------------------|-----------------------------------|
| 1. Fitness Centre | 7. Media/Games Room |
| 2. Stretching Area | 8. Shore Club Spa |
| 3. Guest Suites | 9. Spin Studio |
| 4. Theatre Room | 10. Yoga Studio |
| 5. Private Lounge | 11. Juice Bar and Lounge |
| 6. Party Room / Private Dining | 12. Stairs to Shore Club Sun Deck |

TEN YORK
RIISING ABOVE IT ALL



BILD

2013 BILD Home Builder of the Year



2013 Tarion High-Rise Builder of the Year

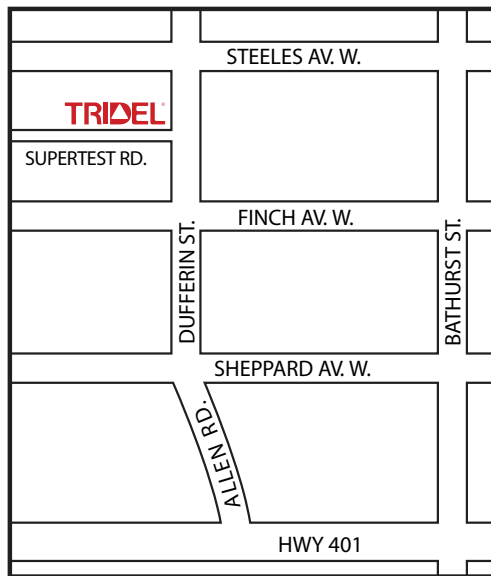
The Shore Club Sun Deck - 8th Floor

- | | |
|-----------------------|------------------------|
| 1. Pool | 4. Men's Change Room |
| 2. Shore Club Seating | 5. Sauna Rooms |
| 3. Reflective Pool | 6. Women's Change Room |

TEN YORK
RIISING ABOVE IT ALL



Presentation Centre



Telephone

(416) 596-9888

Sales Office Address

Tridel Store

20 John St.(Front & John)
Toronto ON M5V 0G5

Office Hours

Monday to Thursday:

11am - 7pm

Friday: Closed

Saturday, Sunday & Holidays:

12pm - 6pm

TRIDEL
BUILT FOR LIFE



BILD

2013 BILD Home Builder
of the Year

AWARD OF
EXCELLENCE

TARION

2013
Builder of the Year
HIGH-RISE BUILDER

2013 Tarion High- Rise
Builder of the Year



tridel.com